

Mixed residential/commercial development 99-105 Regent Street, Chippendale



Completed in 2003, this project was a refurbishment and adaptive reuse of an existing heritage terrace row and the development of a new residential section to the rear of the site.

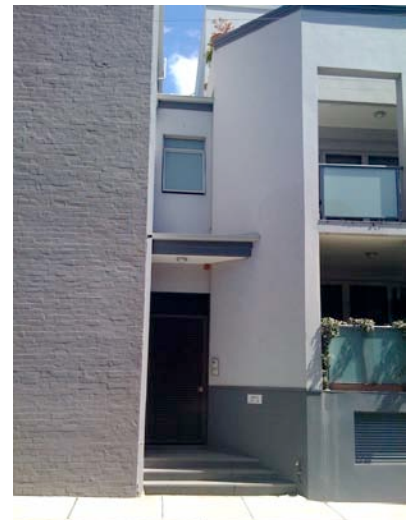
The design refurbished the four existing ground floor commercial spaces. The existing first floor residences were redesigned as “New York” style 1 bed units with mezzanine bedrooms. Decks facing Regent Street were discretely located behind the main front façade, retaining existing glazed windows to provide noise attenuation from the busy street.

The units behind are designed within a simple façade that presents as a solid wall with punched holes. The development is above a discreet secure half-basement car park with generous storage areas.

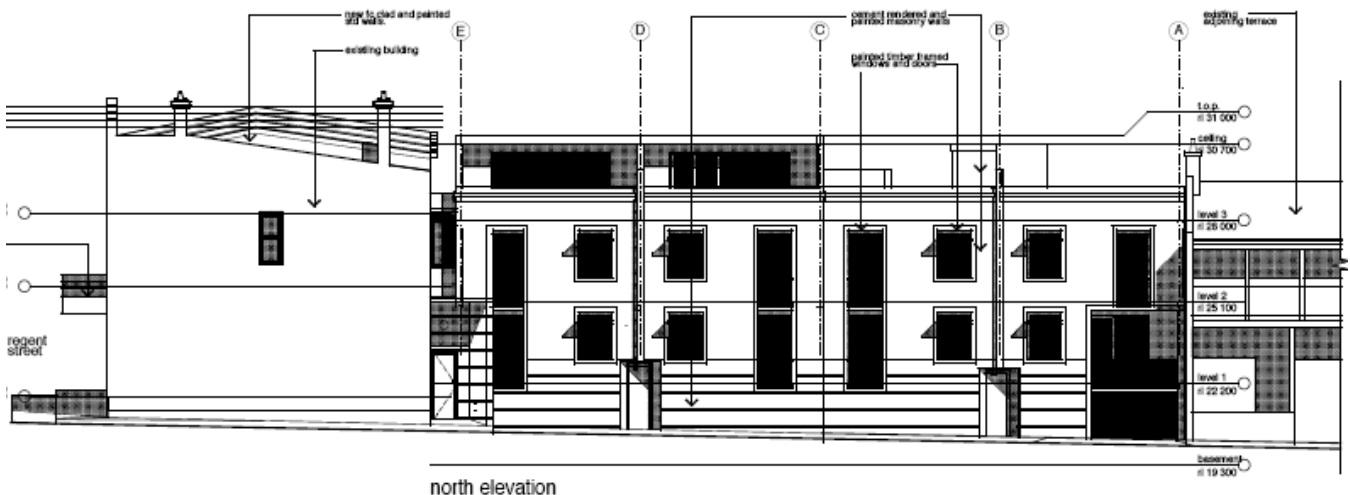
4 x offices, 4 x 1 bed units, 8 x 2 bed units, 1 x 3 bed. 12 cars in secure basement



Regent Street façade.

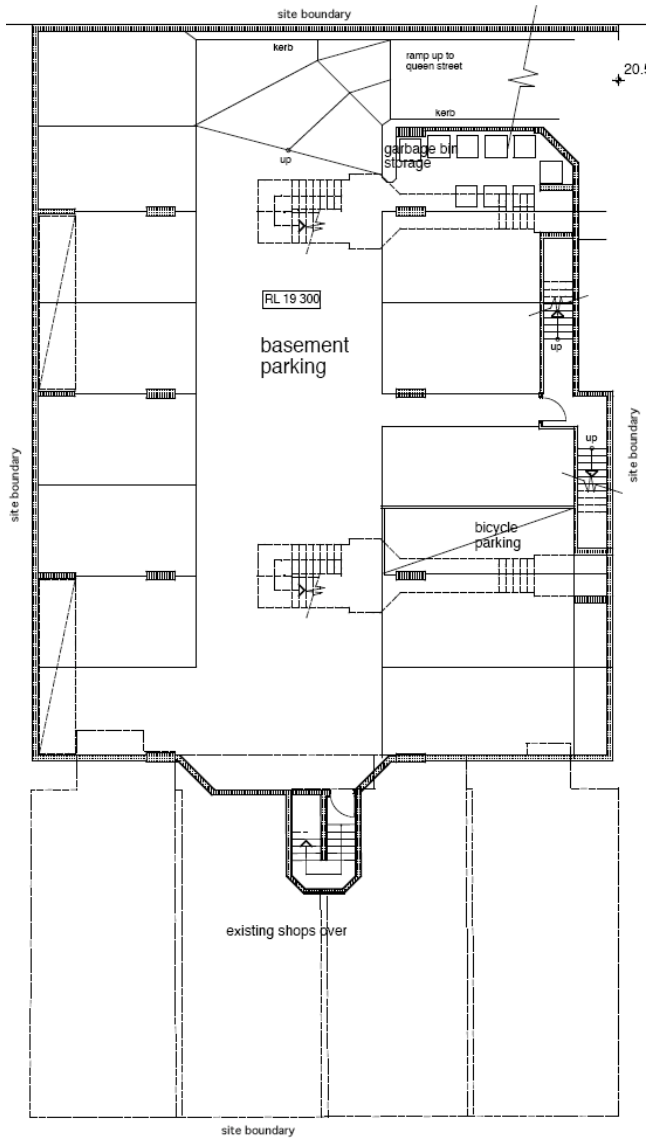


Queen Street link/entry

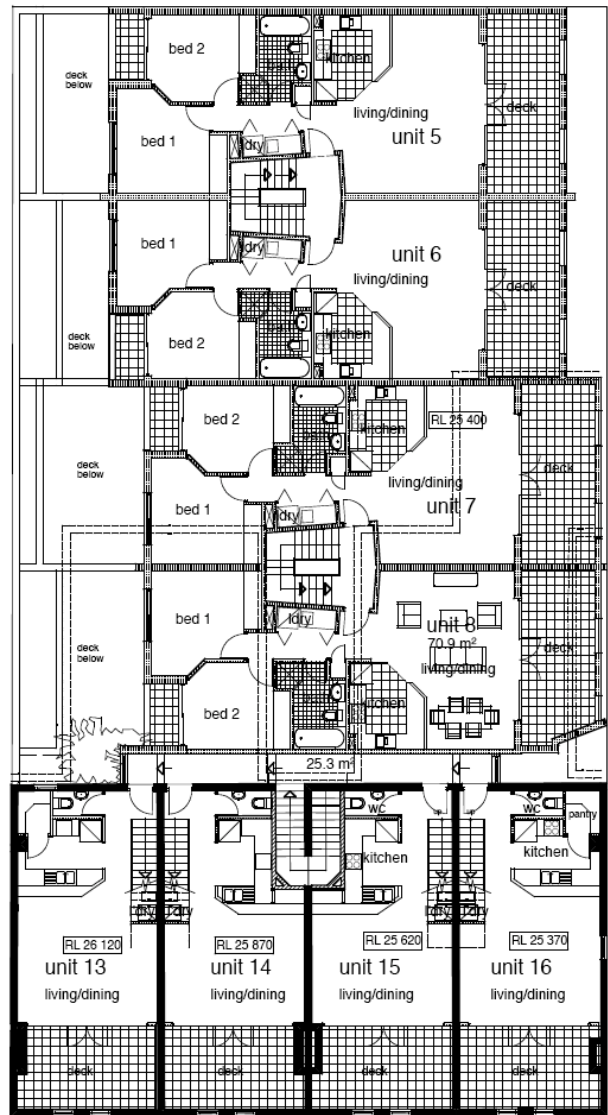




Queen Street façade. Simple punched hole in plain wall.



Basement plan



Typical floor plan