

Residential development 112-124 Pitt Street, Redfern

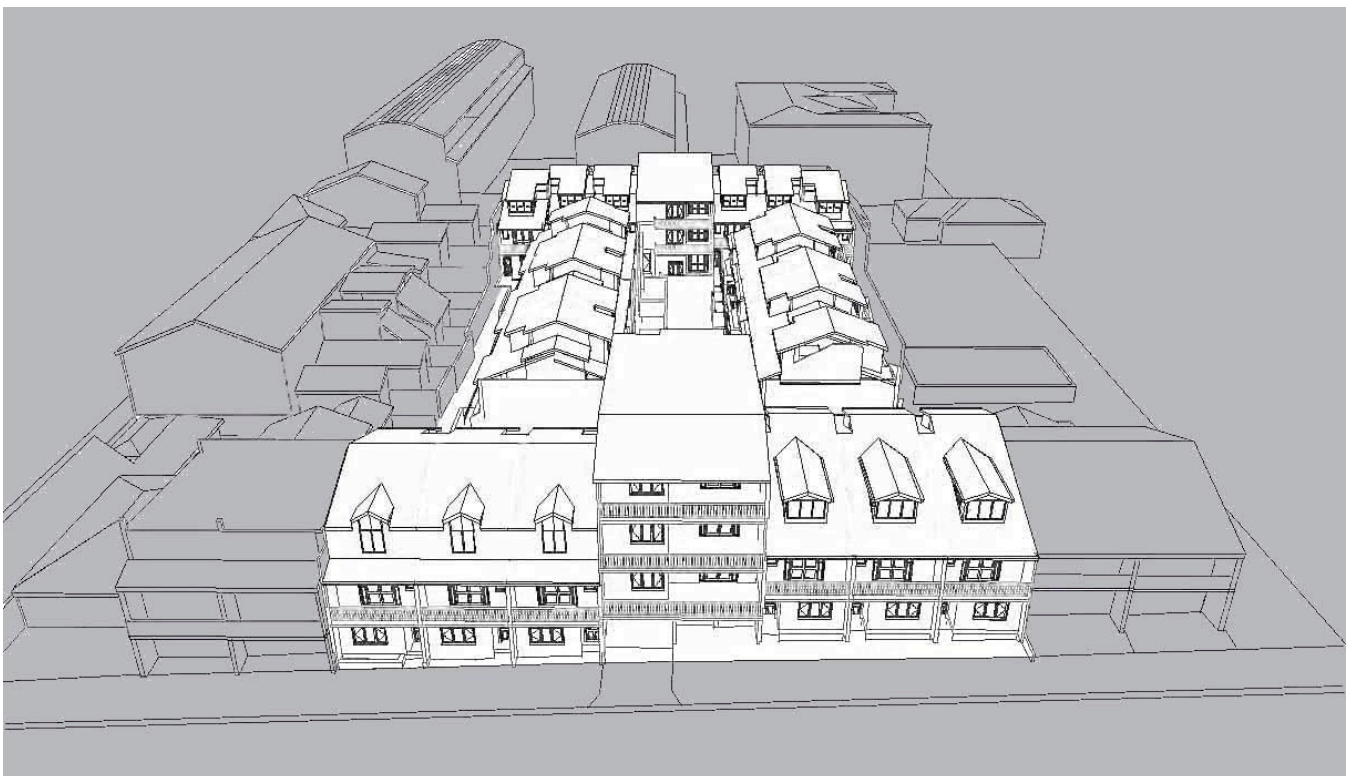


Completed in 2002, this challenging project was an infill development in a Heritage streetscape. The design was based on the traditional terrace house with some variations. The building above the main entry included some single level units. Built to a tight budget the project used simple finishes and forms successfully to create a sympathetic streetscape as well as an interesting internal "street". All units achieved cross flow ventilation as well as living areas with Good solar access. Each townhouse has private courtyard spaces. The development is above a secure basement car park with generous storage areas.

4 x 2 bed units, 2 x 3 bed units, 22 x 3 bed townhouses. 40 cars in secure basement



Pitt Street façade bookended by two groups of existing terraces.



CAD generated 3D model

